

# Ranmoor Society

## News

March 2004

### 2004 Meetings Programme

Members attending our first open meeting in February enjoyed it immensely. John Minnis gave us an enticing preview of the new Architectural Guide to Sheffield Buildings that he and Ruth Harman of Sheffield Archives have been preparing for Yale University Press. This will be one of several guides to buildings in England's major cities, updating the Penguin guides originally prepared by Nicholas Pevsner in the 1950's.

John's wealth of architectural knowledge, supplemented by his comprehensive collection of slides, made for a memorable evening. The Sheffield guide (following that for Manchester, which is already available) is to be published later this year. This, and the associated web-site ([lookingatbuildings.co.uk](http://lookingatbuildings.co.uk)), includes some interesting references to buildings here in Ranmoor.

### Meetings in April and May

Our next meeting looks at local turnpike roads, which were constructed in this area in the late 1700s.

**Howard Smith** has made a special study of these, and will be talking on Tuesday 20<sup>th</sup> April. On Tuesday 18<sup>th</sup> May, our chairman **Andrew Smith** will introduce an account of changes in Ranmoor over the past few decades. Both meetings will be in the Parish Centre, as usual.

### Exhibition on 8<sup>th</sup> & 9<sup>th</sup> May

As part of a series of events to celebrate the 125<sup>th</sup> anniversary of the consecration of St John's church, the Ranmoor Society will be mounting an exhibition of maps, photographs and other memorabilia from our Archive store. As with our exhibition three years ago, we will take over the Garden Room in the Parish Centre to create what we hope will be an equally interesting and attractive display.

Our exhibition will concentrate on the broad historical background of the Ranmoor, Nether Green & Hangingwater areas. Parallel with this, other church-



**RANMOOR COUNCIL SCHOOL c.1915**

See the article overleaf for an explanation

based groups will arrange displays (e.g., photographs of weddings, baptisms and other church events) that relate more specifically to St John's itself. These will be on view at the same times, both in the church and in adjacent rooms in the Parish Centre. Many other celebratory activities are planned throughout May, including an extensive programme of concerts, choirs and recitals in the church.

#### Exhibition times

Saturday 8 <sup>th</sup> May	10.30am - 5pm
Sunday 9 <sup>th</sup> May	11.00am - 4pm

A new booklet recording the 125-year history of St John's has already gone to press and will be available shortly, priced at £3. Copies will be available from May onwards at Ranmoor Society meetings, as well as from other outlets.

### 2004 Subscriptions

*Most members renewed their subscriptions promptly in January. However, some need a further reminder!*

*So, if you find a yellow slip enclosed with this newsletter, you may be in this latter category. Please send your cheque to our membership secretary, Shelagh McDonald, to receive your new membership card containing full details of the 2004 programme.*

### Planning Matters

#### 96 Graham Road

Original plans (to demolish existing bungalow and erect 12 flats (two 4-storey blocks) now followed by a second application.

#### Barncliffe (Redmires Road)

House demolished, after a fire, but an application to build 20 flats (5 storey blocks) is still pending.

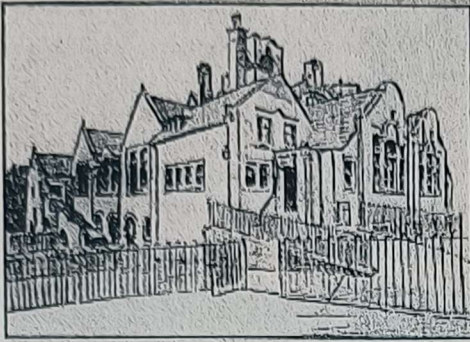
#### Ballard Hall (Ranmoor Park Road)

Application to demolish existing buildings received. Last plans withdrawn to obviate a public enquiry. As yet no further plans lodged.

#### Ranmoor Cliffe Woodland

No building application, but land sold for £30,000.





## Nether Green School

100 years ago a new school, then known as the *Ranmoor Council School*, was opened on Fulwood Road with a large fanfare. It is interesting to see how the *Sheffield Daily Independent* covered the opening ceremony on Wednesday April 27<sup>th</sup> 1904.

### New School Opened

For a considerable period the district of Ranmoor, one of Sheffield's most attractive suburbs, has been increasing in population by leaps and bounds, especially in the Riverdale area. As a consequence the school accommodation has become sadly inadequate, the premises available being the National School in Fulwood and a temporary school in Upper Ranmoor Road, taken over from the Wesleyan denomination.

To meet the increasing needs of the district, the late Sheffield School Board entered upon a scheme for the construction of a new school at Nether Green. That building has been completed under the new Education authority, and yesterday it was formally opened. The interest taken in the new institution was manifested by the very large attendance of Ranmoor residents, having at heart the educational welfare of the city generally. Alderman Clegg presided at the ceremony and commented:

"it appeared strange to one who had been associated with Sheffield all his life that it had been necessary for a school of these large dimensions to be opened in Ranmoor. If anybody had predicted this 15 or 20 years ago they would have been looked upon as an imaginary person".

### Description of the School

The new school is a handsome building and makes a pleasing addition to the architecture of the locality. The elevations have been designed to give a very imposing effect, and this is achieved without extravagance of detail by the grouping of the various gables and turrets. The buildings externally are faced with rockies from the Bole Hill Quarries and the ashlar from Matlock; the roofs are covered with black Westmoreland slates. A caretaker's house, with separate yard and outbuildings, is provided near the Fulwood Road.

When the whole school is completed it will consist of eleven classrooms. At present only eight are built, three being left out on the south side for future extension. The entrances to all the departments are from Fulwood Road, two being on the east side

for the boys and two on the west for the girls and infants. There is a handsome central hall 87ft 6ins long by 34ft wide and 30ft high but at present it is divided by a fixed screen, glazed with plate glass so as to make two large class rooms.

All the class rooms are at least 14 feet high and 10 superficial feet of space is allowed for each scholar. The partitions which divide the hall from the class rooms are of polished pitched pine and glass, so that the head teacher can have full supervision of the whole school. The position of the buildings on the site has been carefully considered, for sunshine and air space are important factors in connection with elementary schools. The rooms are exceptionally well lighted and ventilated... Care has been taken that the principal light should be on the left hand when the children are seated at the desks. There are large asphalted playgrounds, separate ones being provided for boys and girls; and also covered playsheds are provided for each sex, in which are drinking fountains and pencil sharpeners. One of the classrooms has been fitted up as a cooking room for the girls, a special cooking range and small pantry with other fittings being provided.

In October 1915, the school was taken over as a military hospital. (See the photograph on the front page.) The children were moved to other buildings: the infants to the Methodist Chapel next door, the boys to St John's Parish Rooms, and girls to the Wesleyan Chapel in Ranmoor Road.

Head teachers recorded detailed information about the school in formal logbooks until 1975, when they were discontinued. These offer a fascinating glimpse of the school's early history. Society member Marie Taylor has worked extremely hard over the last two years to unravel the historical details contained in the logbooks, and is planning to publish the results of her researches to commemorate the centenary. We will keep members informed.

Nether Green School opened its 100<sup>th</sup>-year celebrations in the week commencing 8<sup>th</sup> March. The Society contributed an exhibition about the history of the school, which was presented in the main hall throughout the week.

### Ranmoor Society Committee 2004

Chairman:	Andrew Swift	268 5158
Secretary:	Gerald Eveleigh	263 0937
Membership Sec:	Shelagh McDonald	230 4090
Treasurer:	Gill Battye	230 1596
Archive Co-ordinator	Peter Warr	230 9174
Planning Matters:	John & Elizabeth Bridgwater	230 5567
General Matters	Margaret Kerry	230 5255
	Bob Loynes	230 3004